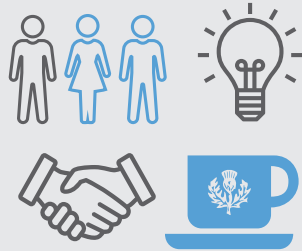
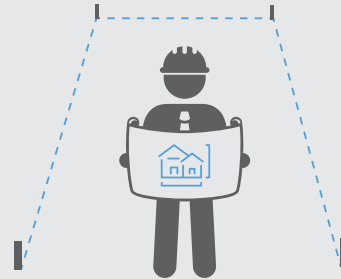


THISTLE ARCHITECTURAL TRANSPORTABLE HOMES

Our step by step process



Initial meeting to select a floor plan
(we can customise any plans to suit).



Site check and transport delivery check -
we make sure what you've picked can fit on your site.



Geotech report - for your foundations.



Consent issued and building starts!
(with regular updates and photos of each stage)



Colour selections



Estimate price (for any changes or upgrades).



Your new Thistle transportable
home is on its way!



Contract signed, building consents prepared and
submitted to council (20 working days).



Deposit paid for Contract Preparation (refundable \$2500)



Thistle
BUILDING COMPANY